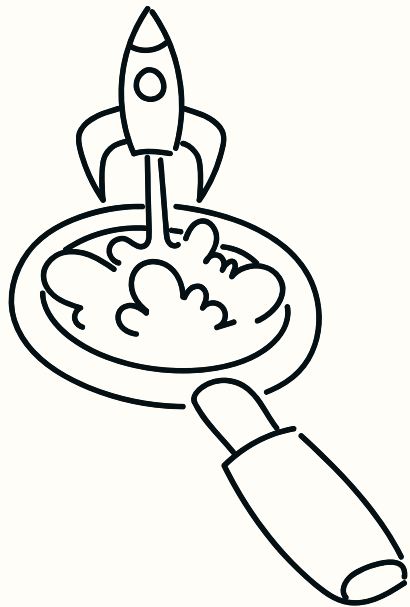


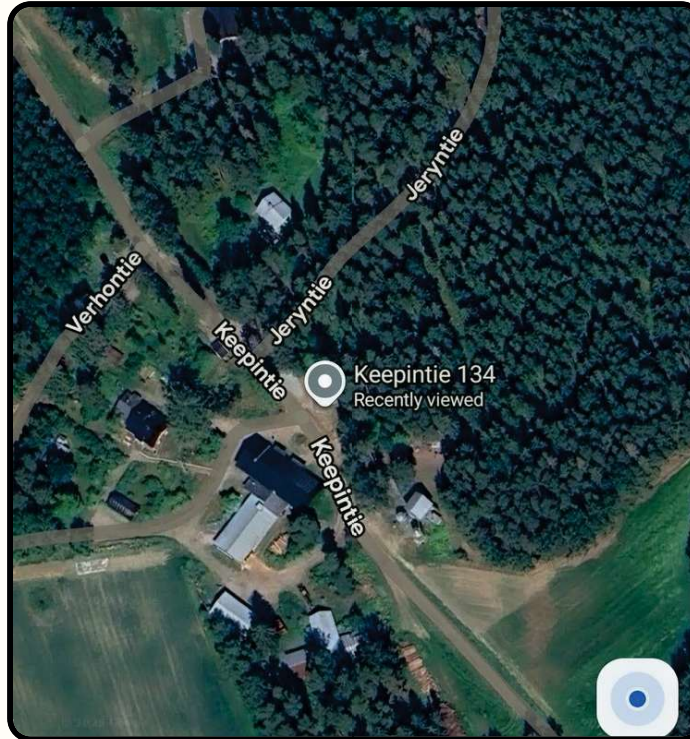
MIKKOLA FARM



Facts:

- Farm grows organic crops, produces honey, sells audio/production and music and graphic design services
- Has forest (with traces of forest grazing in the past and open fields and 0.5 hectare vegetable garden → good for nature tourism
- Forest edge good for trails, wildlife must be protected
- Farm produces and sells local products (e.g. honey, candles) buildings can be used for visitors and events

MIKKOLA FARM



PICTURE / MAPS



SOLUTIONS

Mikkola Farm

Challenges	Solutions
Making the organic farm profitable	Combine organic farming, honey production, nature tourism, and music/creative workshops to generate income
Restoring pastures and protecting wildlife without owning animals	Use temporary grazing (bring in animals seasonally), mow or manage vegetation, plant native species, and protect forest edges
Attracting visitors year-round	Offer seasonal farm activities, workshops, and music/events in farm buildings taking advantage of farm location

BEFORE

Mikkola Farm

Challenge: How forest-field boundary (ecotone) blend better into the landscape and economic viability



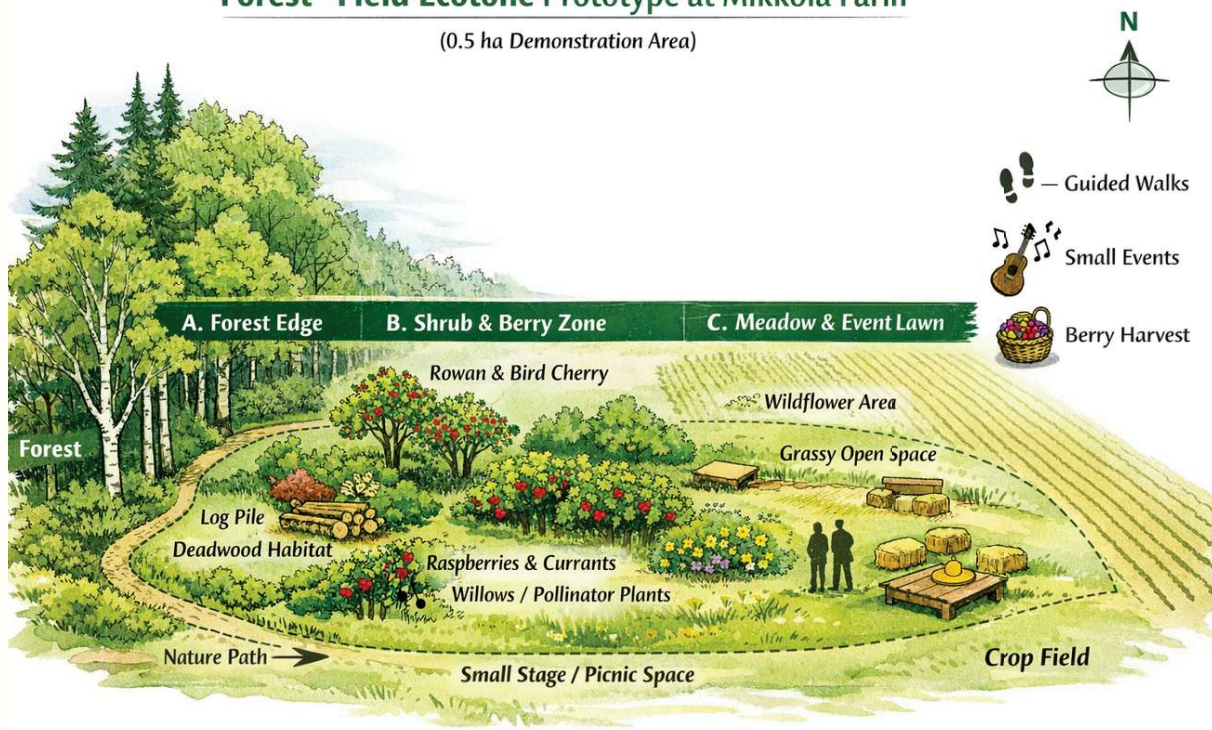
AFTER

**Theory: Forest-Field
Ecotone and Activities
Every Season**

Mikkola Farm

Forest–Field Ecotone Prototype at Mikkola Farm

(0.5 ha Demonstration Area)



- Forest edge restoration and biodiversity habitat
- Berry and shrub agroforestry planting
- Pollinator meadow and open event space
- Simple visitor pathways and seating areas
- Educational and cultural activity space

TIMELINE:

Mikkola Farm

- One Year Restoration and Planting
- Maintenance yearly

Item	What to Do	Time
Forest Edge Restoration	Thin dense spruce, retain old trees, improve sunlight	April – May
Shrub & Berry Planting	Plant currants, raspberries, rowan, willow	May – June
Meadow Establishment	Seed wildflower and clover meadow	May – June
Walking Paths	Install woodchip visitor paths	June
Visitor Seating	Build log benches and rest areas	June – July
Biodiversity Support	Install bird and insect habitats	June – July
Educational Area Setup	Create information boards and learning zones	July
Community Events Start	Guided walks and acoustic concerts	July – August

BUDGET:

Mikkola Farm



Item	What to Do	Cost
Forest Clearing	Selective thinning and safety tools	€ 415
Berry & Shrub Plants	Currants, raspberries, willow, rowan	€1 090
Meadow Seeds	Wildflowers and clover mix	€ 820
Visitor Paths	Woodchip pathway installation	€ 760
Seating Areas	Log benches and resting spaces	€ 390
Educational Signs	Nature and farming information boards	€ 180
Pollinator & Bird Habitats	Bee plants, insect and bird boxes	€ 1060
Event Equipment	Small acoustic event setup	€ 915
TOTAL		€ 5,630

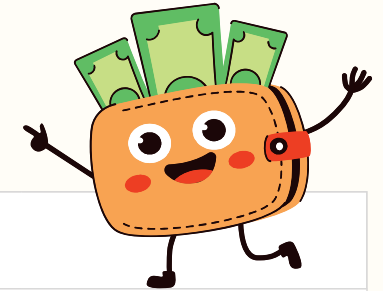
EXCEL CALCULATION:

Mikkola Farm

6	Salaries (e.g.)			
7		months	salary €/month	Salary in total €
8	Worker	6.0	1,158	6,950
9	Intern	6.0	0	0
10	Intern	6.0	0	0
11	SUM			6,950
12				
13	Salaries, total (effective)		Salary sum*effective working hours	5,837.98
14	Indirect employee costs		salaries*indirect employee costs	3,080.70
15	Personnel costs in total			
16				
17	Other costs			
18				
19	Materials			
20	Plant Materials (Currant bushes,Raspberry plants,willow sherbs)		460	
21	Seating Materials (Long benches - timber,Bench hardware-bolts,rope)		310	
22	Biodiversity support eterials (Bird nest boxes,insect houses)		550	
23	Chainsaw fuel & engine oil		430	
24	Plants & Seeds (Berry bushes + Meadow seeds + clover)		1,180	
25	Educational Sign materials(Outdoor information boards)		190	
26	Visitors path materials (wood chips,Small wooden posts)		760	
27	Equipment			
28	Personal Protective Equipment (2 Helmets,safety gloves,glasses)		140	
29	Forestry & Tool Safety Equipment (Chainsaw protective trousers,boots,earmuffs)		275	
30	First Aid & Emergency Equipment (Emergency fire extinguisher,First aidkit)		215	
31	Visitor Safety Equipment (Trail safety rope barriers,Trail warning and direction signs)		170	
32	Services			
33	Mini tractor soil preparation		250	
34	Carpenter installation support (benches & seating)		350	
35	Signboard printing service		180	
36	Travel expenses			
37	Material transport		101	
38	Plant collection trips		69	
39	Other costs		0	
40	Other costs, total		5,630	
41				
42	Total costs		14,549	
43				

COST-SAVING:

Mikkola Farm



To Do / Add	Labor & Volunteers
Forest Work	Forestry Students & Volunteers
	Students assist thinning and biodiversity habitat creation as practical training.
Pathways & Seating	Community Talkoot Events
	Local volunteers help build visitor paths and seating areas.
Planting & Meadow Development	Horticulture & Agriculture Students
	Students design planting layout and manage agroforestry pilot.
Educational Content	Student Research & Internship Work
	Students create visitor learning materials and biodiversity monitoring projects.

ADVANTAGES & DISADVANTAGES

Mikkola Farm

+

- Organic farming and honey production already exist.
- Agritourism activities can bring additional income.
- Forest–field ecotone improves biodiversity.
- Berry and shrub planting increases farm products.
- Farm buildings can host workshops and events.

-

- Visitor infrastructure requires initial investment.
- Tourism income may vary depending on season.
- Outdoor events depend on good weather.
- Wildlife may be disturbed by increased visitors.
- Trails and facilities require regular maintenance.