

Mikkola Farm

Forest Area Improvements

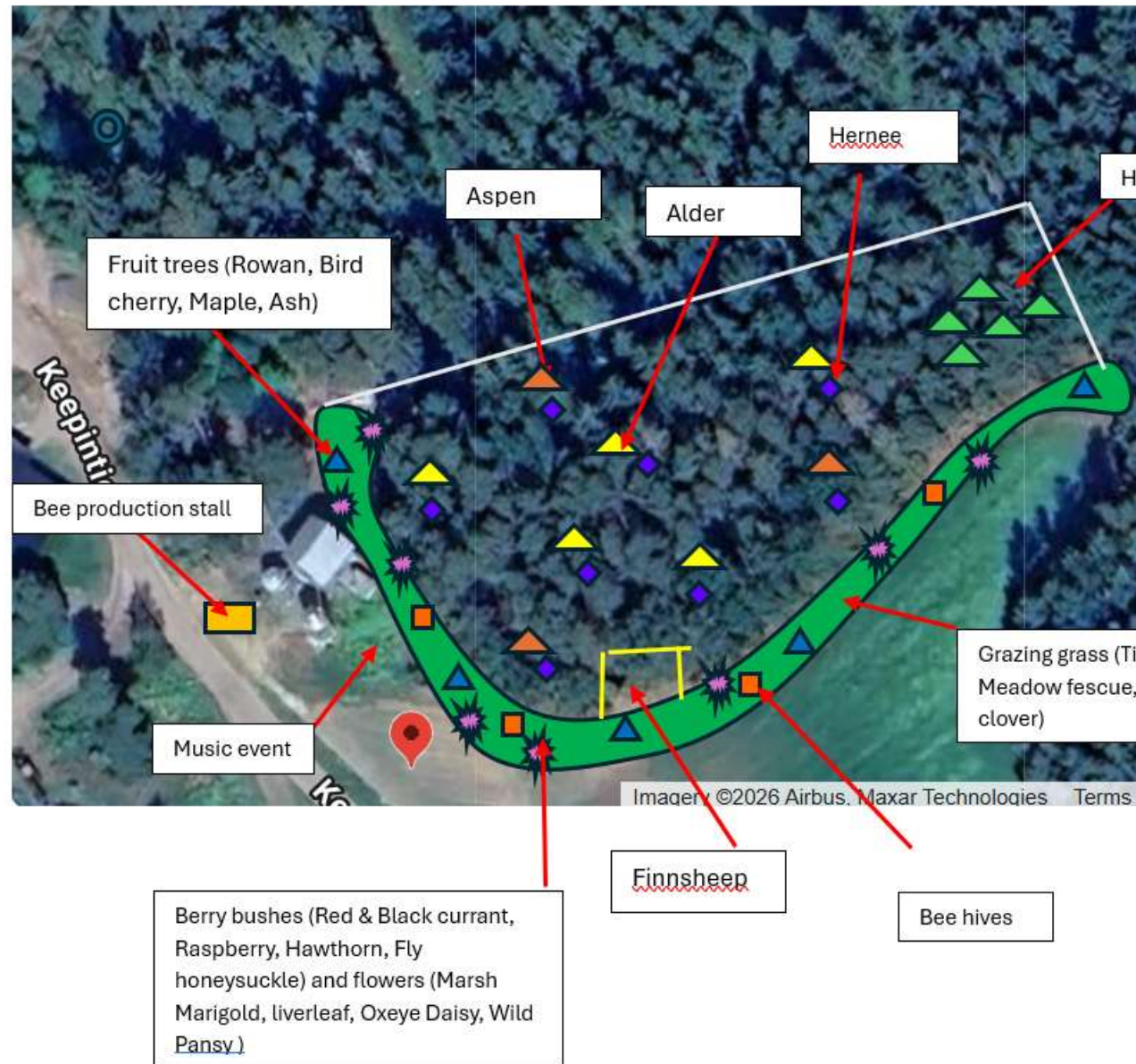
- Plant hazel bushes (fenced area)
- Add new mixed trees (aspen, alder)
- Grow green peas to fix nitrogen and support young tree growth
- Introduce Finnsheep

Bio Corridor Development

- Fruit trees planted in the center (rowan, bird cherry, maple, ash)
- Berry bushes on both sides (currant, raspberry, honeysuckle)
- Add flower strips to support pollinators
- Use grazing grass as sheep fodder

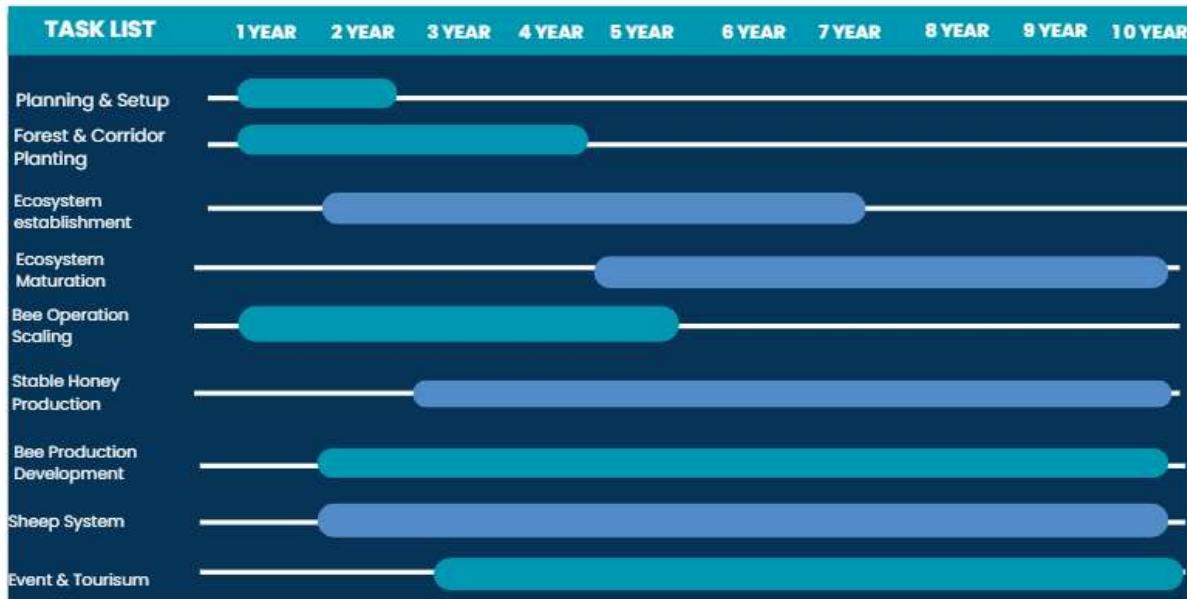
Beekeeping & Tourism Potential

- Place bee hives along the corridor for pollination and honey production
- Small-scale direct sales and visitor activities can be developed over time



PROJECT TIMELINE

Gantt Chart



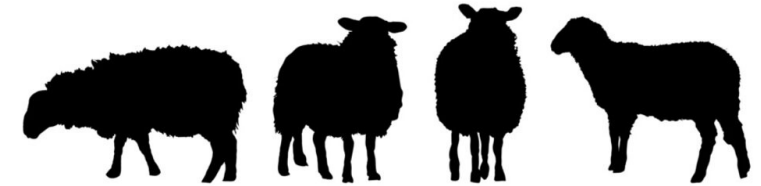
Project Timeline

- The project progresses from initial planning and forest/corridor planting to ecosystem establishment and maturation, while bee operations, honey production, sheep systems, and tourism activities scale and stabilize over the long term.

Financing

Expenses

- Biodiversity trees
- Bee equipment & jars
- Berry bushes & hazel plant
- Sheep purchase
- Flower strips & grass seed
- Fence materials
- Pea cultivation
- Sheep shelter (basic)
- Bee hives (2 new)
- Wooden honey stall
- Soil preparation & machinery
- Services



Possible Financing

- CAP Agricultural Subsidies (Common Agricultural Policy)
- Rural Development Grants (ELY Centre) through the regional ELY Centre. Farm diversification (tourism, farm products)
- Income from the forest thinning
- Also, incomes from the honey, pea/hazel production and social events

Financing

1st year

Description	Cost	Description	Income	Net Profit
Biodiversity trees (100 seedlings)	400.00 €	Honey sale	1,100.00 €	
Berry bushes & hazel plants	880.00 €	Cap Eco-schemes support	7,000.00 €	
Flower strips & grass seed	270.00 €	Visitors/event	300.00 €	
Pea cultivation (trial period)	75.00 €			
Bee hives (2 new)	1,200.00 €			
Bee equipment & jars	250.00 €			
Sheep purchase (3 Finnsheep)	540.00 €			
Fence materials (180 m)	1,440.00 €			
Sheep shelter (basic)	900.00 €			
Wooden honey stall	1,200.00 €			
Tools & small equipment	400.00 €			
Soil preparation & machinery	300.00 €			
Services (installation & help)	1,000.00 €			
Travel & logistics	200.00 €			
Seasonal labour (2 months)	4,400.00 €			
Total	13,455.00 €		8,400.00 €	-5,055.00 €

2nd year

Description	Cost	Description	Income	Net Profit
Plant replacement & care	500.00 €	Honey (6–7 hives)	1,800.00 €	
Soil improvement & mulch	600.00 €	Farm products & wax	350.00 €	
Bee hive maintenance	350.00 €	Small eco-visits / local sales	600.00 €	
Sheep feed & veterinary	450.00 €			
Maintenance labour (part-time) 1 month	2,500.00 €			
Marketing & packaging	300.00 €			
General maintenance (fence, tools)	400.00 €			
Total	5,100.00 €		2,750.00 €	- 2,350.00 €

3rd year

Description	Cost	Description	Income	Net Profit
Add 2 new bee hives	1300	Honey (8–9 hives)	3200	
Plant maintenance	450	Wax, candles, value-added prod	700	
Sheep feed & care	500	Farm visitors / educational visits	1200	
Seasonal labour (two month)	5200			
Equipment repair & upgrade	500			
Marketing & branding	400			
Total	8,350.00 €		5,100.00 €	- 3,250.00 €