

# MIKKOLA FARM



THE LANDSCAPE IS ORGANIZED INTO THREE ZONES  
CROP AREA → TRANSITION ZONE → FOREST AREA



## AIMS

- maintain productive crop field
- create a transition zone between field and forest
- introduce tourism and educational activities



## FUNDING

- EU CAP agricultural support
- LEADER rural development programme
- ELY environmental grants

## FUTURE INCOME SOURCES

- crop production
- berry and fruit harvest
- honey production
- tourism events and camping

## BENEFITS

- Improves biodiversity
- Produces diverse food products
- Supports sustainable farming
- Creates tourism opportunities

## TIME LINE

### IMMEDIATE PHASE

A young transition zone begins forming between field and forest

### MEDIUM PHASE (5 YEARS)

- introduce grazing animals
- install rotational grazing fencing
- expand berry shrubs and orchard trees
- establish alley cropping strips between tree rows

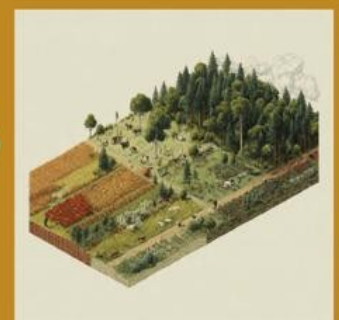
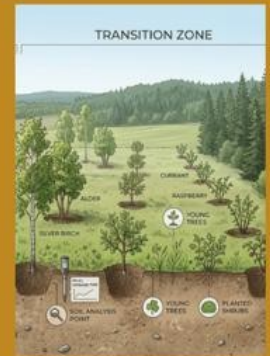
### DEVELOPMENT PHASE (10 YEARS)

- expand orchard production
- introduce mushroom cultivation using log systems

- create walking paths through the agroforestry zone
- build small camping area and event space

### 20 YEARS

MATURE MULTIFUNCTIONAL LANDSCAPE.  
FULLY DEVELOPED SILVOPASTURE ECOSYSTEM



[HTTPS://CREATIVECOMMONS.ORG/LICENSES/BY/4.0/](https://creativecommons.org/licenses/by/4.0/)